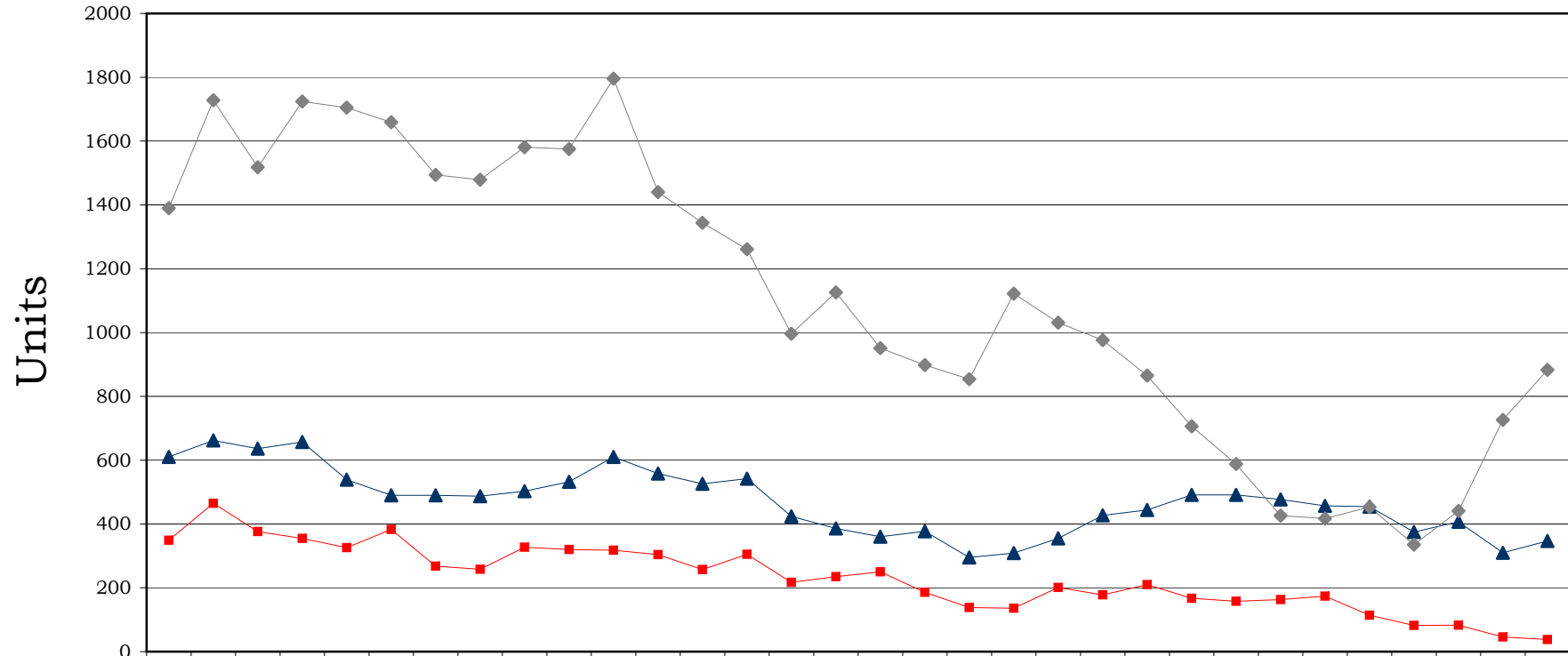
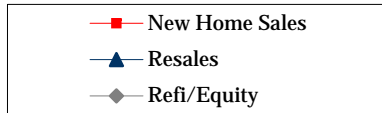




Washoe County Insured Recording Statistics July 2006 - February 2009 Resale/NewHome/Refinance Trend



	July	Aug	Sep	Oct	Nov	Dec	Jan-07	Feb	Mar	Apr	May	Jun	July	Aug	Sep	Oct	Nov	Dec	Jan-08	Feb	Mar	Apr	May	June	July	Aug	Sept	Oct	Nov	Dec	Jan-09	Feb
New Home Sales	349	465	376	355	326	383	268	258	327	320	318	304	257	305	217	235	250	186	138	136	201	178	210	167	158	163	174	114	82	83	46	38
Resales	610	662	636	657	539	490	490	487	503	532	610	558	526	542	424	386	360	377	295	309	355	427	444	491	491	477	454	375	407	310	347	
Refi/Equity	1390	1728	1518	1724	1705	1659	1494	1479	1581	1575	1796	1440	1344	1261	996	1126	951	898	854	1122	1031	976	865	706	588	426	417	453	335	441	726	883

*Source: Dataquick Information Systems. Ticor does not guarantee the accuracy of this data. This is for informational purposes only and is intended to view the general market trend in Washoe County.